



+918470930121 | [www.abcbuildcon.in](http://www.abcbuildcon.in)



Welcome To The World Of Homestead

+918470930121 | [www.abcbuildcon.in](http://www.abcbuildcon.in)

# Projects

**MICHAEL SCHUMACHER  
WORLD TOWER**



**BALLET BY  
SHARAPOVA**



**Zevk**



**WORLD OF  
CARS**



# Michael Schumacher World Tower, Sector-109, Gurgaon



- Concept Design – UHA, London
- Construction by Shapoorji Paloonji
- 7-star SCHUMI KLUB
- 110 limited edition apartments
- Sky observatory deck at 200ft
- Cantilevered Helipad with ferry service

+918470930121 | [www.abcbuildcon.in](http://www.abcbuildcon.in)

# Ballet By Sharapova, Sector-73, Gurgaon



- 129 limited edition apartments
- Cantilevered Helipad with ferry service
- 7-star CLUB SHARA
- Signature Tennis Academy
- Russian Ballet Academy

+918470930121 | [www.abcbuildcon.in](http://www.abcbuildcon.in)

# THE CITY OF HOMESTEAD

Greater Gurgaon



*Just*

Where Home is <sup>^</sup> an Accessory

+918470930121 | [www.abcbuildcon.in](http://www.abcbuildcon.in)

# BUY AN AMENITY GET A HOME FREE

DEDICATED PLAY AREAS FOR CHILDREN



YOGA & MEDITATION CENTER



NATURE TRAILS



AMUSEMENT PARK



SOLAR TRAM



FIRST OF ITS KIND RAIN FOREST



CYCLING TRACK



WATER BODY



HORSE RIDING ACADEMY



MUSIC ACADEMY



COH HOMELAND SECURITY



+918470930121 | www.abcbuildcon.in



SPORTS & RECREATIONAL FACILITY

# Location Of COH





# THE CITY OF HOMESTEAD

CUTEBURROW RESIDENCES

+918470930121 | [www.abcbuildcon.in](http://www.abcbuildcon.in)

## Highlights

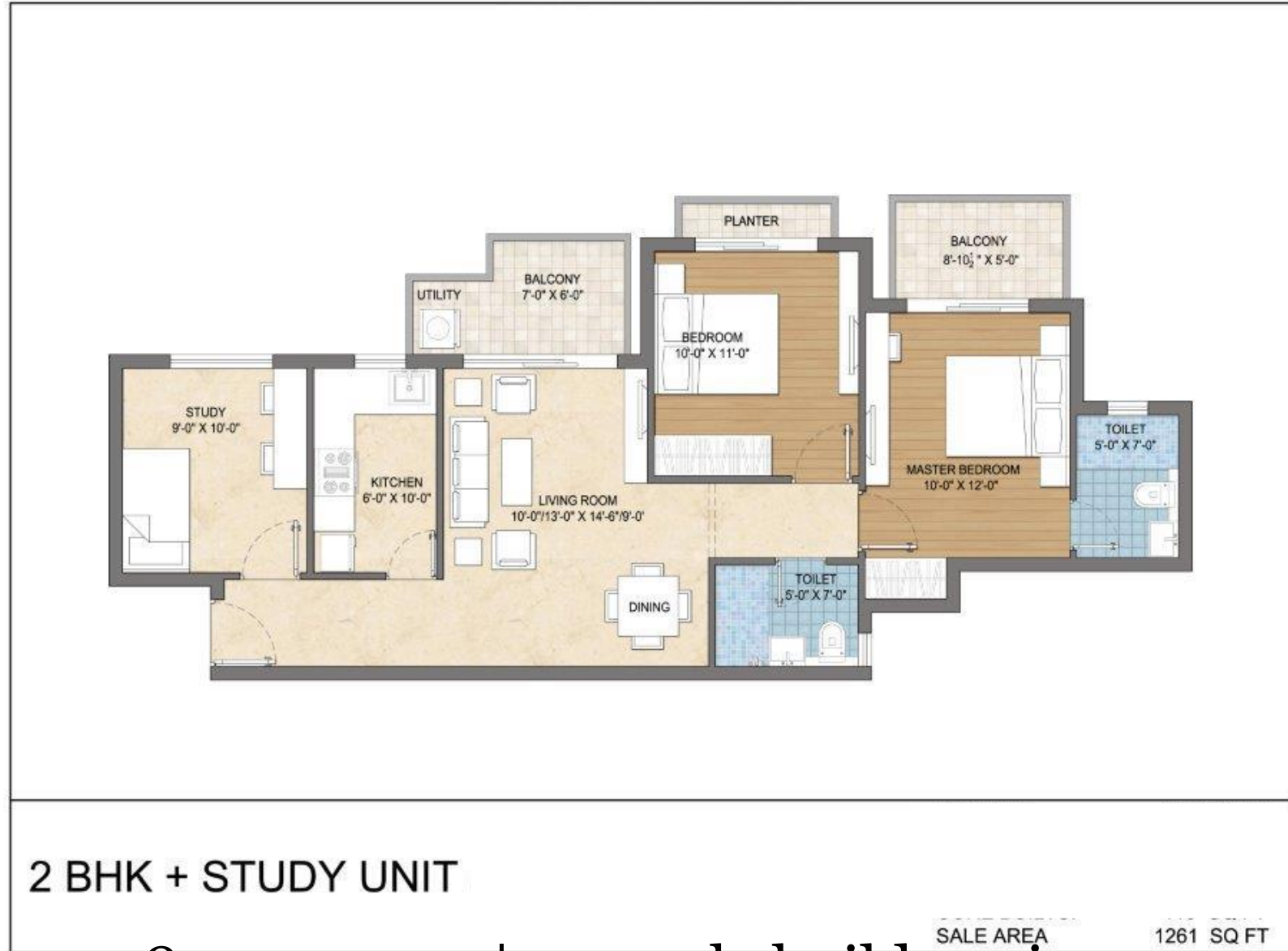
- **Location** – *20 minutes from Golf Course Extn. Road.*
- **Connectivity** – *Excellent connectivity from Sohna Road / KMP / Proposed Outer Ring Road.*
- **Wi-Fi Enabled Group Housing**
- **On foothills of Aravali hills.**
- **Never before Amenities** – *Amusement Park / Solar Tram / Festival Street Market/ Jungle Café/ Nature trails/ Man-made lake, and many more.*
- **Sports Academies** – *Golf, Cricket, Tennis, Football, Horse Riding and a Music Academy too.*
- **Open Space** – *Open area for parks, Water body, cycling track, dedicated play areas for children.*
- **Security** - *24x7 “Homeland Security”*
- **Limited lifestyle Apartments**
- **Architect** - *DFI*
- **Type of Apartments** – *2BHK, 2BHK + Study, 3BHK.*
- **Customer friendly attractive Payment Plans** – *Flexi Plan & Subvention Plan\**

# Floor Plan



+918470930121 | [www.abcbuildcon.in](http://www.abcbuildcon.in)

# Floor Plan



+918470930121 | [www.abcbuildcon.in](http://www.abcbuildcon.in)

# Floor Plan



+918470930121 | [www.abcbuildcon.in](http://www.abcbuildcon.in)

# Specification

SPECIFICATIONS						
AREAS	WALLS	FLOORING	CEILING	INTERNAL DOOR	EXTERNAL WINDOWS/ GLAZING	OTHERS
LIVING ROOM/DINING/LOBBY/ FAMILY LOUNGE	Oil Bound Distemper	Vitrified Tiles/Laminated Flooring	Oil Bound Distemper	Hardwood door frame & flush Door	Aluminum windows	
MASTER BEDROOM	Oil Bound Distemper	Vitrified Tiles/Laminated Flooring	Oil Bound Distemper	Hardwood door frame & flush Door	Aluminum windows	
OTHER BEDROOMS	Oil Bound Distemper	Vitrified Tiles/Laminated Flooring	Oil Bound Distemper	Hardwood door frame & flush Door	Aluminum windows	
KITCHEN	2' Ceramic Tiles above counter; Oil Bound Distemper	Anti skid Ceramic Tiles	Oil Bound Distemper	Hardwood door frame & flush Door	Aluminum windows	Kitchen with the following items ⌚ Counter Top ⌚ Stainless steel sinks CP fittings)
TOILET	Ceramic Tiles of size nal	Anti skid vitrified tiles	Oil Bound Distemper	Hardwood door frame & flush Door	Aluminum windows	Chinaware- Wash basin and W.C. CP fittings
BALCONIES/TERRACES	Exterior Paint	Anti skid Ceramic Tiles	Exterior Paint	Hardwood door frame & flush Door	M S railing	

**Other Facilities:**

**Security**

Gated community with 24X7 security

**Services**

**Lifts**

**Power Back Up**

Disclaimer: The information and contents set out herein including services, facilities, design, specifications, areas are indicative and are subject to change as decided by the company. Marginal variations may be necessary during construction.

# Price List

Price List	
Basic Sale Price	As Applicable
BSP - Flexi Plan (After Inaugural Discount of Rs.300/-PSF)	As Applicable
BSP - Subvention Plan	As Applicable
EDC/IDC	Rs.400/- Per Sqft.
IFMS	Rs.50/- Per Sqft.
Car Parking (One mandatory)	Rs.150,000/-(Per bay)
Club membership	Rs. 75,000/-
PBIC	Rs. 20,000/-(PKVA)

# Payment Plan - FLEXI

## PAYMENT PLAN

Milestone	Charges	
At the time of Booking	10% of BSP	
within 45 days of Booking	10% of BSP	
On Start construction	10% of BSP	
On completion of Middle floor	25% of BSP + 50 % EDC/IDC	
On completion of Superstructure	25% of BSP + 50 % EDC/IDC	
On Offer of Possession	20% of BSP+ Other Charges	

OTHER CHARGES: CAR PARKING, CLUB MEMBERSHIP, PLC, IFMS, PBIC, REGISTRATION & STAMP DUTY

+918470930121 | [www.abcbuildcon.in](http://www.abcbuildcon.in)



# Payment Plan- SUBVENTION

PAYMENT PLAN		
MILESTONE	CHARGES	Mode
At the time of Booking	10% of BSP	From Customer
within 45 days of Booking	10% of BSP	From Customer
As per Construction	70% of BSP	From Bank
On Offer of Possession	10% of BSP+ Other Charges	From Bank

OTHER CHARGES: EDC/IDC, CAR PARKING, CLUB MEMBERSHIP, PLC, IFMS, PBIC, REGISTRATION & STAMP DUTY

+918470930121 | [www.abcbuildcon.in](http://www.abcbuildcon.in)

## PLC -CUTEBURROW RESIDENCES

PLC	Charges PSF	PLC	Charges PSF
GF	100	Park Facing	50
FF	75	Corner	50
SF	50	Park Facing + Corner	75
TF/FF	25	Top Floor - 1	75
Top Floor	100	Top Floor - 2	50

Note: Maximum 2 PLC will be charged

# SITE DEVELOPMENT – THE CITY OF HOMESTEAD



+918470930121 | [www.abcbuildcon.in](http://www.abcbuildcon.in)

# THE CITY OF HOMESTEAD

HIGH  
SECURITY  
ZONE

+918470930121 | [www.abcbuildcon.in](http://www.abcbuildcon.in)







+91 8470930121

+918470930121 | [www.abcbuildcon.in](http://www.abcbuildcon.in)



Marketed By:



+918470930121 | [www.abcbuildcon.in](http://www.abcbuildcon.in)