



by  **BESTECH**

# Specifications

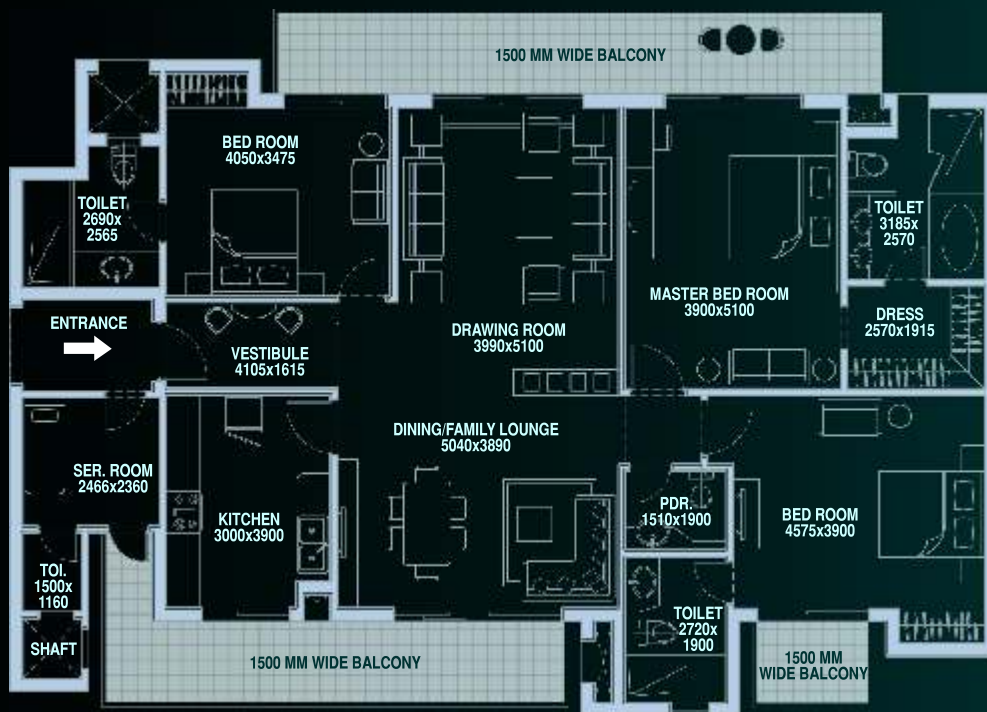


General	<ul style="list-style-type: none"><li>• Imported marble in living and dining area</li><li>• Laminated wooden flooring in bedrooms</li><li>• Anti-skid ceramic tiles in all balconies</li><li>• Seasoned hardwood frames with European style shutters</li><li>• Veneer teak wood main door</li><li>• Powder coated aluminium windows / glazing</li><li>• Provision of copper conduits and drainage pipes for air-conditioning</li><li>• R.O. Water Purification Unit</li><li>• 11 KVA power back-up for each apartment</li></ul>
Kitchen	<ul style="list-style-type: none"><li>• Modular Kitchen</li><li>• Vitrified tiles flooring</li><li>• Ceramic tiles up to 2' above counter top, rest acrylic emulsion paint</li><li>• Granite counter with double bowl stainless steel sink and drain board</li></ul>
Bathroom / Powder Room	<ul style="list-style-type: none"><li>• Bath tub with Jacuzzi fittings in the toilets of master bedroom</li><li>• Double Basin in toilets of master bedroom</li><li>• Shower cubical in all bathrooms</li><li>• Single lever CP fittings (Hansgrohe or equivalent)</li><li>• Marble flooring</li></ul>
Main Lobby	<ul style="list-style-type: none"><li>• Air-conditioned ground floor lobby area with designer furniture and luxurious decor</li><li>• Imported marble / Granite flooring with impressive floor patterns</li></ul>
Elevators	<ul style="list-style-type: none"><li>• High speed lifts. One passenger and one stretcher lift</li><li>• Luxurious cab finishes of high quality</li></ul>
Complex Security	<ul style="list-style-type: none"><li>• Boomer gates, intercom system and manual patrolling at main gate</li><li>• 24-hour digital video recording surveillance of building at entry points</li><li>• CCTV in secluded areas for continuous monitoring &amp; recording</li></ul>
Amenities	<ul style="list-style-type: none"><li>• Intercom &amp; phone facilities</li><li>• Dedicated super high-speed (wireless) Internet connection for residents</li><li>• Driver waiting area in upper basement with facilities for refreshing</li></ul>



## 3 BEDROOM

TOTAL AREA	2470 SQ. FT.
TOWERS	A, B, C, D, G, H, I



## 4 BEDROOM

TOTAL AREA	3125 SQ. FT.
TOWERS	A, C, D, E, I



## 4 BEDROOM DELUXE



TOTAL AREA	3715 SQ. FT.
TOWERS	A, B, C, D, E, H







[www.abcbuildcon.in](http://www.abcbuildcon.in) | +91 8470930121

## SITE PLAN



Park  
View **Spa**



### LEGENDS

- AMPHITHEATRE
- BARBEQUE PIT
- WATER BODY
- LAWN
- ATM
- CARD ROOM
- SWIMMING POOL
- KIDS POOL
- MEDITATION PARK
- KIDS PLAY
- AIR-CONDITIONED APARTMENTS\*
- SQUASH COURT
- MASSAGE PAVILLION
- BADMINTON COURT
- BASKET BALL
- TENNIS COURT
- CONTEMPLATION GARDEN / CHESS COURT
- READING CORNER
- CHILD BUS-SHELTER
- JOGGING TRACK

\* Tower C, D & G





**PARK VIEW**  
CITY  
Sohna Road, Gurgaon

**PARK VIEW**  
CITY 2  
Sohna Road, Gurgaon

**PARK VIEW**  
Residency  
Sector - 3, Gurgaon

**PARK VIEW**  
DELIGHT

**BESTECH City**  
Dharuhera  
Right on NH - 8

**BESTECH CITY CENTER**  
Dharuhera

**BESTECH Chambers**  
Sushant Lok, Gurgaon

**BESTECH cyber park**  
NH - 8, Gurgaon

**BESTECH**  
BUILDING MORE THAN TRUST

Bestech India Pvt Ltd, Bestech House # 124, Sector 44, Gurgaon - 122002 Tel: +91 124 4540077; Fax: +91 124 4540033 Website: [www.bestechgroup.com](http://www.bestechgroup.com), E-mail: [sales@bestechgroup.com](mailto:sales@bestechgroup.com)

Note: Visual representations shown in this brochure are purely conceptual. All Building Plans, Specifications, Layout Plans etc. are tentative and subject to variation & modification by the company or the competent authorities sanctioning plans. Diagrams are not to scale.