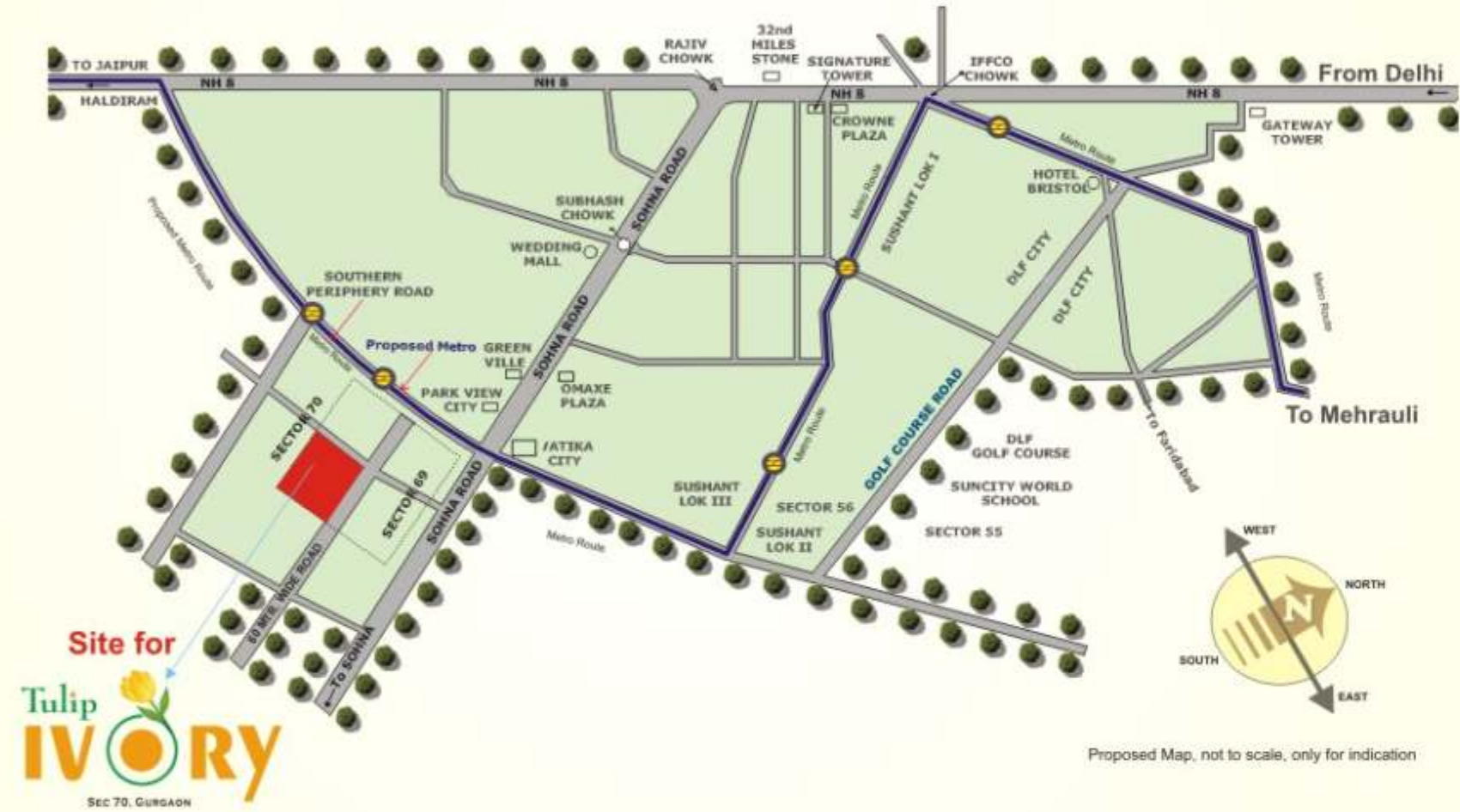


### LOCATION MAP



## Tulip Infratech Pvt. Ltd.

Regd. Office: 12th Floor, Indra Prakash Building, 21 Barakhamba Road, New Delhi-110 001, India.  
 Ph: +91-11-4151 2001, 4151 2002, 4351 5660/61/62 Fax: +91-11-2373 1000  
 E-mail: info@tulipgroup.in Web: www.tulipgroup.in

Disclaimer: This brochure is purely conceptual and not a legal offering. The promoters/architects reserve the right to add/delete any details/specifications if so warranted by the circumstances. Sell, furnishing, furniture and gadgets are not part of the offering.

# Tulip IVORY

SEC 70, GURGAON

*Spacious homes  
make life more enchanting*

# S P A C E

bigger than your expectation



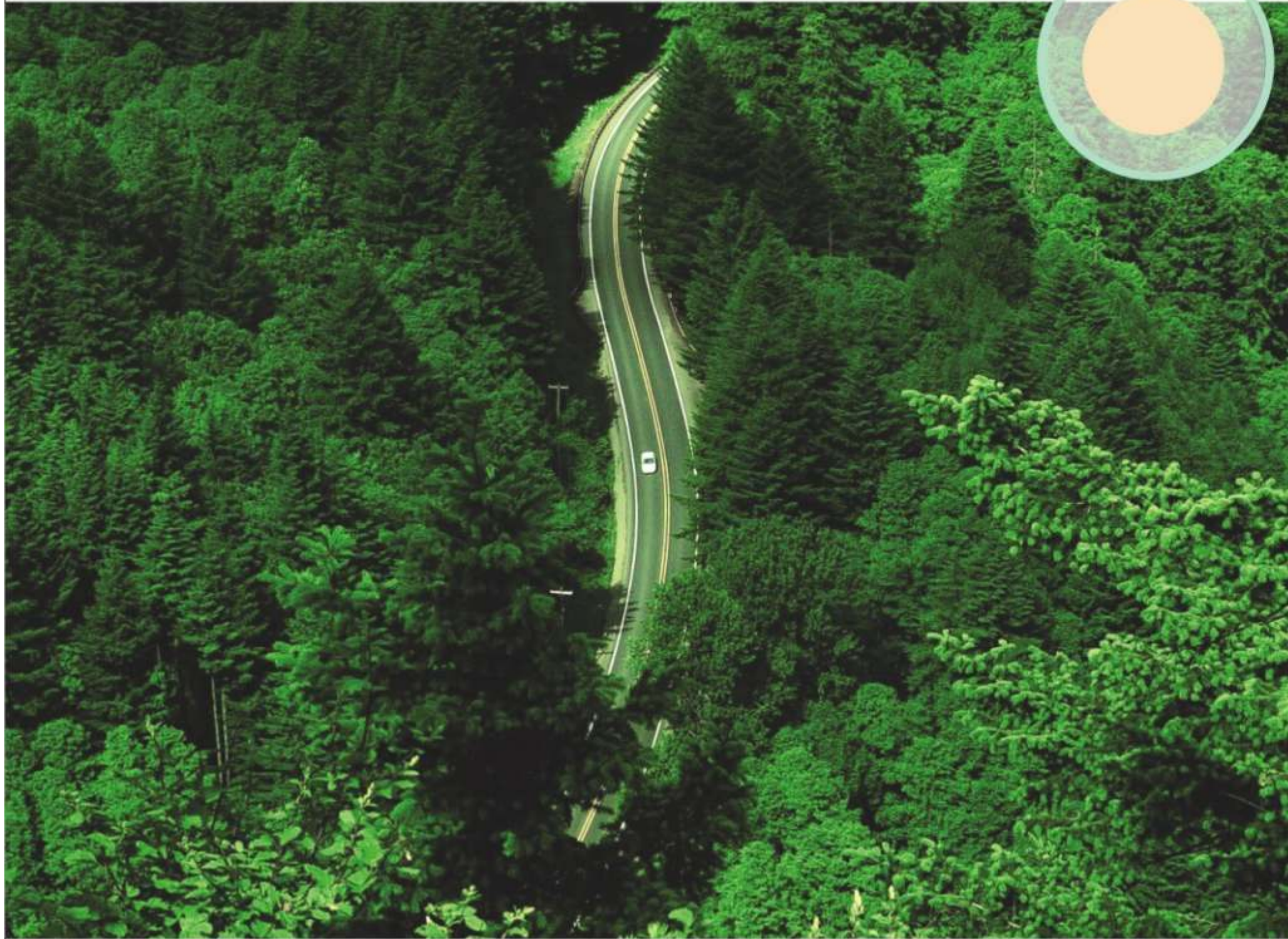
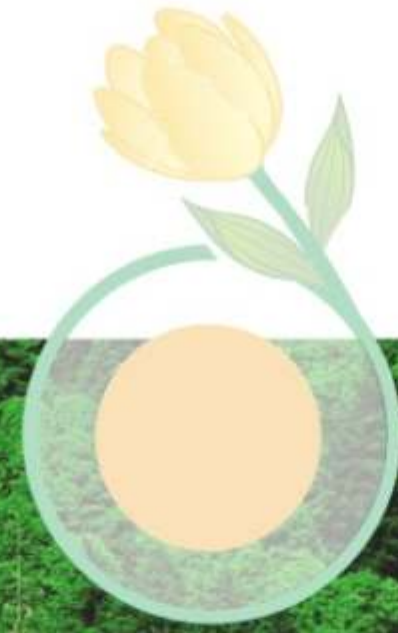
Tulip  
**IVORY**  
SEC 70, GURGAON

**A**fter the mega success of Tulip Grand, Tulip Petals, Tulip Orange and Tulip White, we are once again coming out with state-of-the-art homes known as Tulip Ivory. With rich pale white facade, these homes are inundated with superb facilities and space.

Space, that makes life comfortable, Space, that motivates you to adorn your home the way you want Space, that we all look forward, Space that signifies opulence.



Finesse touches pinnacle when it is surrounded by ample **S P A C E**



**S**o true ... that is why we have chosen the most exclusive and sought after location to construct fine and elegant Ivory homes. Surrounded by green foliage and dotted with all the modern amenities, this location makes the living inexplicable experience. Leisure Spots, Bird Sanctuary, Recreational Arcades, Hi-Tech Resorts, Avant-garde Gymnasium, Amusement Parks, Multinational Companies, you name it and it is here.

#### Enticing features -

60 Mt wide approach road

300 mt from proposed metro link

Easy approachability from NH-8

20 mins from IGI and Domestic Airport

Located on sector 70, Sohna Road, Gurgaon



Abundant S P A C E for fairy & fun moments



**O**ur newly constructed Ivory homes with myriad choices—**Condominiums, Villas, Penthouses**, make life a celebration all the way. Family members living here can enjoy the space the way they want - Whether it is listening to fairy tales in a room inundated with dolls, story books, stars, toy cars or a dining area which is spacious enough to throw a party.

In short, when you are here, you relish and store moments, precious moments to cherish in your good olden days when your mansion would be your best pal.

#### Enticing features -

- Well designed entrance lobby
- Space for wardrobes in all bedrooms
- Naturally lighted and ventilated rooms
- Enough space for the state-of-the art electronic gadgets
- The high standard vitrified flooring in living and bed room area
- Each room having wide doors and windows allowing fresh air



S P A C E from where she cooks  
space from where he gets good looks



**G**one are the days when kitchen was confined to cooking. Today its her cockpit from where she connects with her home as well as keep in touch with outer world. Keeping all the needs of contemporary alpha women in mind, we have created space she would cherish throughout her life.

Likewise we understand how mad are men for their washrooms. Today these luxury washrooms are not just any place with bollywood divas cutouts. Body massage to reading to watching IPL its his territory and that's why we have constructed them keeping his taste in mind.



S P A C E makes life more enthralling



**T**own ship backed by vicinity dotted with often visiting destinations at stone throw away distance makes living heavenly experience. And why not, when all of us run out of time and we try to curb more and more travelling hours. Carrying the same concern, we have constructed Tulip Ivory, where destinations of our routine travel are with in few kms .

#### Enticing features -

- Temple for prayer
- Multiplexes for movie buffs
- Business hubs and Corporate offices
- Shopping centres for shopholics
- Best hospitals to provide the best cure
- Mesmerising garden inviting you to stroll
- World class schools for quality education



S P A C E makes life more enthralling



**T**own ship backed by vicinity dotted with often visiting destinations at stone throw away distance makes living heavenly experience. And why not, when all of us run out of time and we try to curb more and more travelling hours. Carrying the same concern, we have constructed Tulip Ivory, where destinations of our routine travel are with in few kms .

#### Enticing features -

- Temple for prayer
- Multiplexes for movie buffs
- Business hubs and Corporate offices
- Shopping centres for shopholics
- Best hospitals to provide the best cure
- Mesmerising garden inviting you to stroll
- World class schools for quality education



*S*PECIFICATIONS



LOCATION	WALLS	FLOOR	DOORS & WINDOW'S FRAMES	DOORS & WINDOWS SHUTTERS	OTHERS
LIVING ROOMS	DRY DISTEMPER	CERAMIC TILES TERRAZZO	HARDWOOD OR EQUIVALENT	FLUSH DOOR & HARDWOOD WINDOW SHUTTERS OR EQUIVALENT	
BED ROOMS	DRY DISTEMPER	CERAMIC TILES/ TERRAZZO	HARDWOOD OR EQUIVALENT	FLUSH DOOR & HARDWOOD WINDOW SHUTTERS OR EQUIVALENT	
KITCHEN	2' HIGH CERAMIC TILES ABOVE COUNTER	ANTI SKID CERAMIC TILES	HARDWOOD OR EQUIVALENT	FLUSH DOOR & HARDWOOD WINDOW SHUTTERS OR EQUIVALENT	MARBLE/GRANITE COUNTERS WITH STAINLESS STEEL SINK
TOILETS	PATTERN OF CERAMIC TILES AND DRY DISTEMPER	ANTI SKID CERAMIC TILES	HARDWOOD OR EQUIVALENT	FLUSH DOOR & HARDWOOD WINDOW SHUTTERS OR EQUIVALENT	WHITE SANITARY FIXTURES, C.P. FITTINGS, PROVISION FOR HOT AND COLD WATER SUPPLY SYSTEM
BALCONIES		ANTI SKID CERAMIC TILES			
LIFT LOBBIES		CERAMIC TILES/ TERRAZZO			
EXTERNAL FACADE	PERMANENT TEXTURE/ PAINT FINISHED				



Tulip  
**IVORY**  
SEC 70, GURGAON

*...make it your address*