



manTRI

Mantri Developers

Bangalore | Chennai | Hyderabad | Pune

About Us



- Mantri Developers Pvt. Ltd. , one of India's leading Real Estate Company was founded by Mr. Sushil Mantri in the year 1999
- The company is focused on the development of residential sector, retail, hospitality, IT Parks and educational institutions in Bangalore, Chennai, Hyderabad and Pune



mantri

Our Values

Punctuality



Quality



Reliability



Speed



Transparency



Values

THAT REPRESENT OUR WORTH.

Our Icons

Mantri Altius

- First Project completely sold by Invitation only
- Winner of the CNBC Crisil award for India's best residential property in 2007



Mantri DSK Pinnacle



- South India's Tallest Residential Tower
- 46 storey accommodating 133 luxury homes
- First project with Aqua Gym in India
- Sky Observatory on the 42nd floor
- First residential project to have a sky observatory
- Smart homes for Smart people™ – Powered by Cisco



mantri

Mantri Espana



- 339 Super Luxury Homes; Rich with Mediterranean landscape and glamorous amenities
- Smart homes for Smart people™ – Powered by Cisco
+91 8470930121 | www.abcbuildcon.in

manTRI | MANYATA

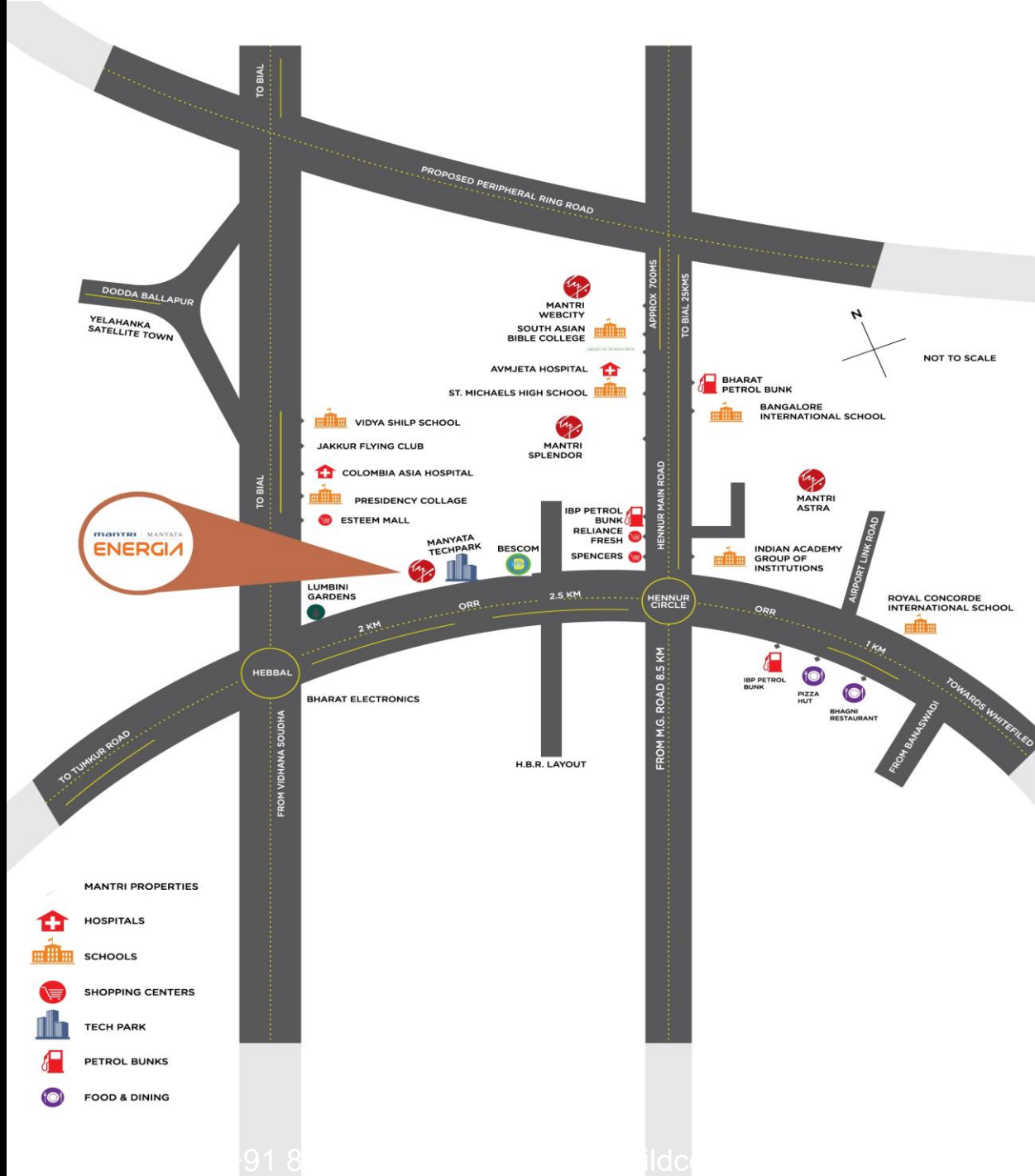
ENERGIA

Inside Manyata Tech park, Hebbal



mantri

The Address



91 8

ldc

Location USPs

Easy Accessibility:

- Located inside Manyata Tech Park.
- Outer Ring Road joins BIAL towards the north and joins Bangalore city towards the south
- Well connected to city's business districts, educational institutions and shopping areas.



Landmarks:

- Schools of national and international repute are in close vicinity.
- Columbia Asia Hospital within 3 kms.
- Mere 8 kms from M G Road and CBD areas.

High Points

- ✓ New Iconic Structure
- ✓ Naturally ventilated & well lit Designer Apartments with Contemporary looks.
- ✓ Each core plate has four units and all units overlooking the landscaped garden.
- ✓ Green Building features.
- ✓ Energy Trees.
- ✓ Rain Forest.
- ✓ One of its kind of high end clubhouse with host of amenities.



mantri

Landscape Plan



Landscape Features

- Beautifully landscaped Gardens with water bodies.
- Outdoor Gym.
- Pick up and drop off point.
- Cycle Track
- Floating Gazebo.
- Maze
- Children's Play Areas.
- Basket ball practice court.
- Aromatic Garden.
- Paved garden walk.
- Jogging/Walking Trail.
- Green Building Features.
- Many other amenities...

Elevation Views



mantri

Elevation View



+91 8470930121 | www.abcbuildcon.in

Elevation View



+91 8470930121 | www.abcbuildcon.in

Elevation View



mantri



+91 8470930121 | www.abcbuildcon.in



mantri

Landscape View



Landscape View



mantri



+91 8470930121 | www.abcbuildcon.in

Night View



mantri



+91 8470930121 | www.abcbuildcon.in

Clubhouse

- Health Club.
- Multipurpose hall.
- Gymnasium.
- Indoor Squash Court.
- TT Room.
- Billiards.
- Aerobics.
- Crèche.
- Mini- Theatre and host of other amenities..

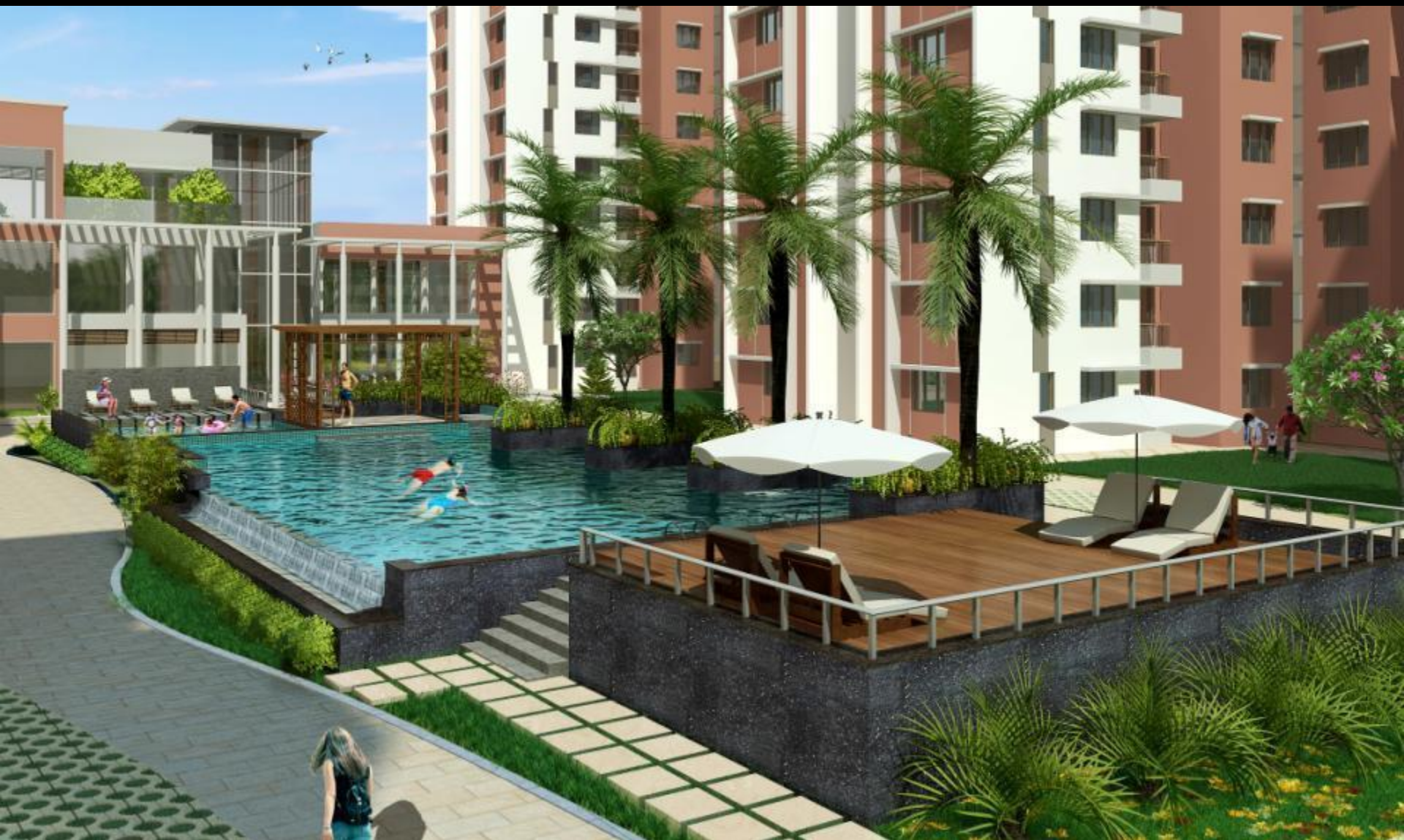
Clubhouse View



Clubhouse View



Clubhouse View



Clubhouse Lounge



GYM





mantri

Game Room





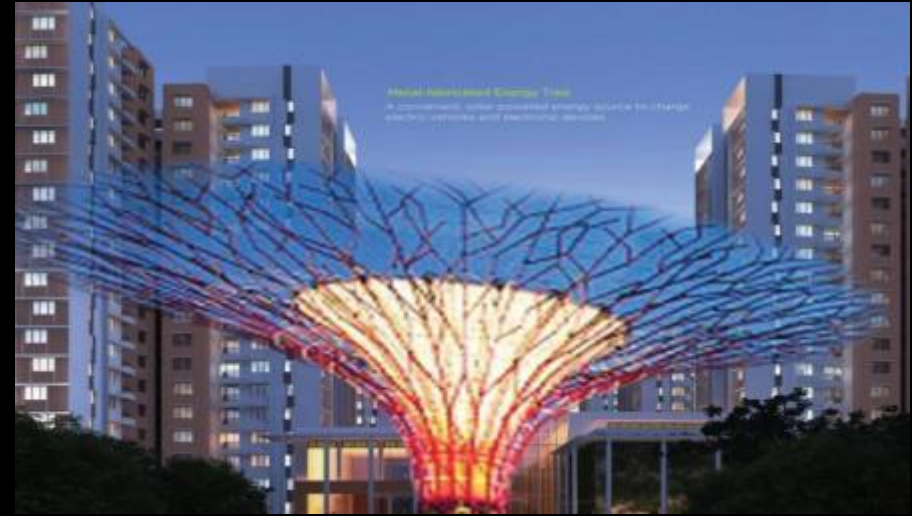
mantri

Banquet Hall



Amenities

Common Amenities



- Mantri Manyat Energia is proud to offer with trendsetting and first of its kind amenities
- Energy tree,
 - Outdoor work area,
 - Rain forest and host of other amenities..



mantri

Common Amenities



Clubhouse:

- Well equipped Health Club
- Separate Steam, Sauna and Massage room for ladies and gents



mantri

Indoor Amenities



- Squash court
- Pool Table
- Laundromat
- Tele Medicine centre
- Convenience Store
- Crèche
- Table Tennis and other indoor games
- Concierge



Interior Views

Living Room





mantri

Master Bedroom





mantri

Bed Room







mantri

Children's Bedroom

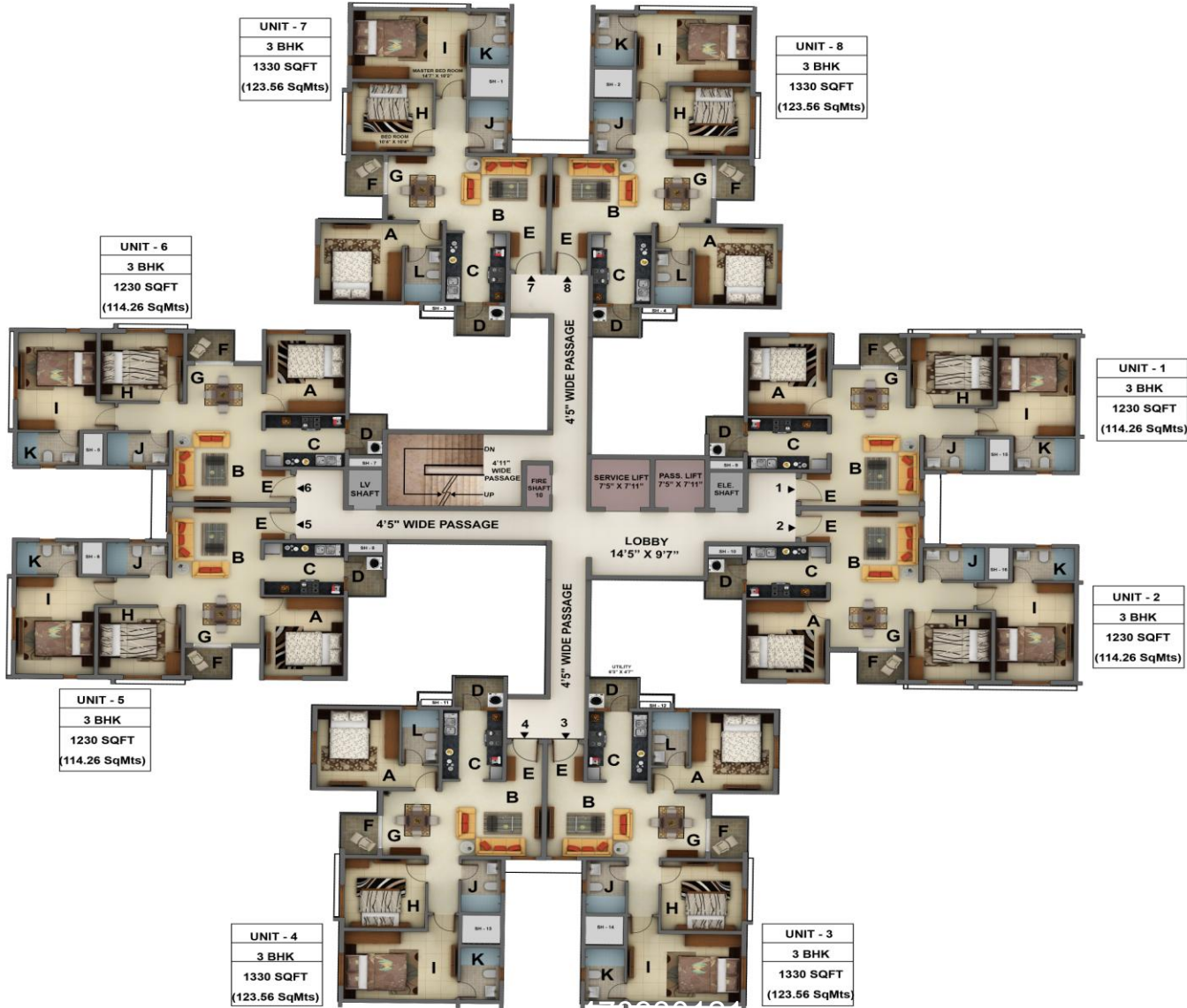


Floor Plans



mantri

Typical Tower Plan

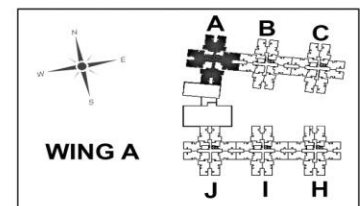


LEGEND UNIT 1,2,5,6

- A. BEDROOM - 10'2" X 11'10"
- B. LIVING - 11'3" X 10'8"
- C. KITCHEN - 10'2" X 7'8.5"
- D. UTILITY - 4'5" X 5'9"
- E. FOYER - 3'10" X 4'11"
- F. BALCONY - 5'11" X 4'9"
- G. DINING - 9'6" X 9'10"
- H. BEDROOM - 10'6" X 10'2"
- I. M.BEDROOM- 10' X 14'7"
- J. C.TOILET - 7'10.5" X 5'0"
- K. TOILET - 7'10.5" X 5'0"

LEGEND UNIT 3,4,7,8

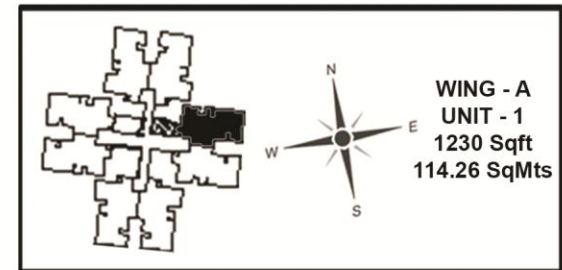
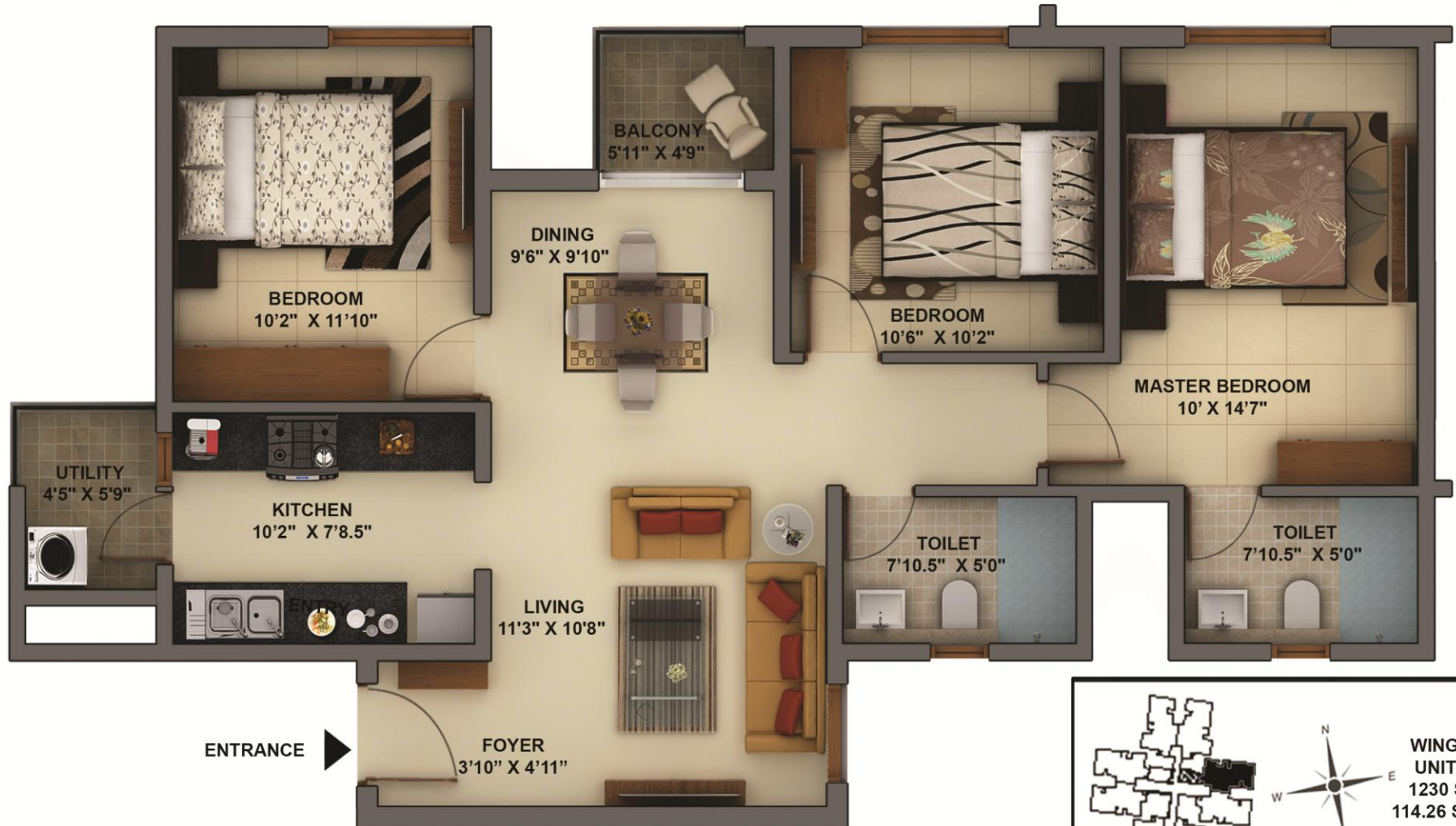
- A. BEDROOM - 10'6" X 11'8"
- B. LIVING - 10'6" X 11'2"
- C. KITCHEN - 7'8" X 10'4"
- D. UTILITY - 6'3" X 4'7"
- E. FOYER - 4'7" X 5'9"
- F. BALCONY - 4'9" X 6'3"
- G. DINING - 9'10" X 9'8"
- H. BEDROOM - 10'4" X 10'4"
- I. M.BEDROOM- 14'7" X 10'2"
- J. C.TOILET - 5'0" X 7'10.5"
- K. TOILET - 5'0" X 7'10.5"
- L. TOILET - 4'9" X 8'0"





mantri

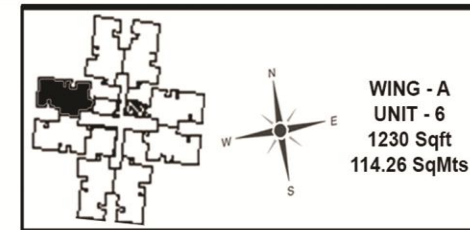
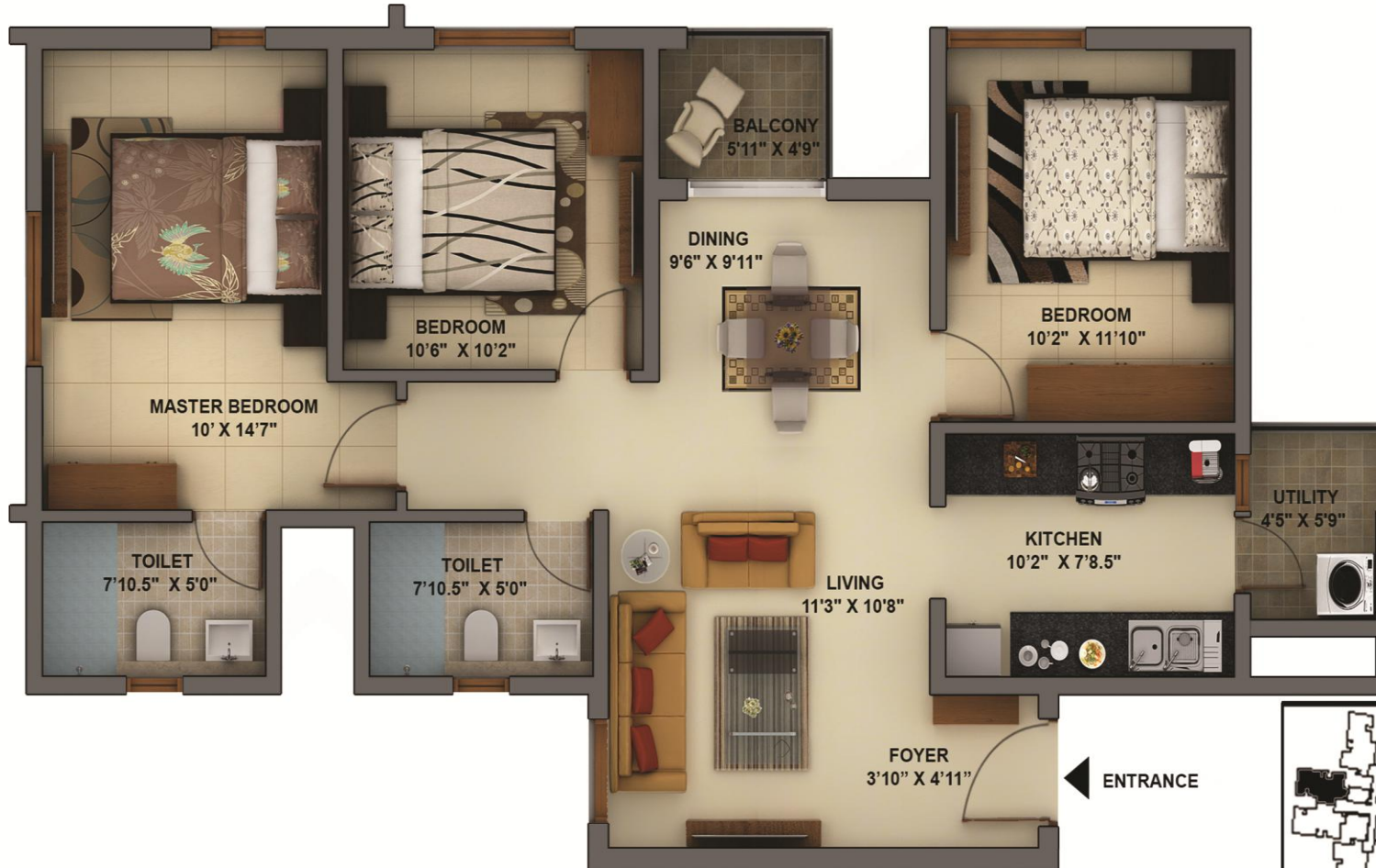
3 BHK – 1230 sq.ft (114.27 sq.mts)





mantri

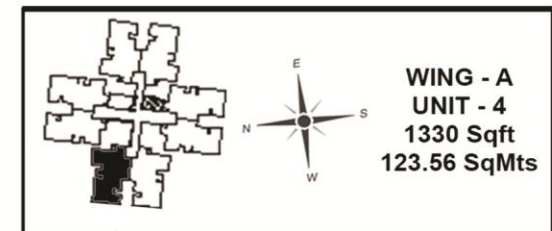
3 BHK – 1230 sq.ft (114.27 sq.mts)





mantri

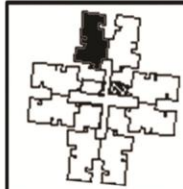
3 BHK – 1330 sq.ft (123.56 sq.mts)





mantri

3 BHK – 1330 sq.ft (123.56 sq.mts)



WING - A
UNIT - 7
1330 Sqft
123.56 SqMts

Differentiators



MANTRI PROMISES

- On time, every time
- Highest carpet area
- Award-winning landscapes
- Attention to detail
- Community living

PROPCARE

- Project maintenance
- Rentals & resales

MANTRI insignia

- An exclusive loyalty program
- Points on every successful purchase/referral
- Redemption of points from a wide range of exclusive benefits and privileges

SPACEETHETICS

adding style to your space

- One-stop shop for home interiors
- Premium, top of the line

accessories

Awards and Accolades

Awards and Accolades.



Mantri Developers was honored by CMO Asia with the award for Brand Excellence.



Mantri Developers was adjudged as one of India's Top 10 builders at the "Construction World Architect & Builders awards."



Mantri Developers was awarded the CNBC Awaaz CRISIL Real Estate Award for India's best Residential Building.



Mr. Sushil Mantri was bestowed with the "Young Visionary Award in Real Estate Infrastructure" by CSI.



Mr. Sushil Mantri was awarded "Entrepreneur of the Year" by Big Brands Research.



Mantri Developers was conferred with the prestigious CII Sustainability award for "STRONG COMMITMENT TO EXCEL" on the journey towards sustainable development.



mantri

World Class Management Systems



We at Mantri Developers are committed to providing eco-friendly commercial and residential dwellings in a safe and healthy environment. We abide by our commitment to prevent pollution and meet, legal and other requirements. And continually improve the effectiveness of our management system.

We will ceaselessly work towards minimizing occupational risks and hazards at our work stations. And we respect the principle of social accountability and meet its requirements.



Contact Information

Head Office: Mantri House
#41, Vittal Mallya Road, Bangalore – 560 001
Ph: +91-80-4130 0000, email: homes@mantri.in

Project Office: Mantri Manyata Energia
Inside Manyata Tech Park,
Hebbal, Bangalore.
e-mail: energia@mantri.in
SMS: mantri to 56767

Dubai e-mail: dubaisales@mantri.in
T: +97104-358-4305
M: +97155-6873-150

Singapore e-mail: singaporesales@mantri.in
T: +656-226-2352
M: +659-375-7224

www.mantri.in

Toll free : 1800-121-0000

This Presentation is conceptual in nature and not by any means a legal offering.
The promoters reserve the right to change, delete or add any specifications or plans mentioned herein.

+91 8470930121 | www.abcbuilder.in

Thank you

+91 8470930121 | www.abcbuildcon.in